

# Constant Climate Standard Incubator

**Precise and stable operation  
With optional real-time IoT monitoring**



**Precise High Temperature Control:** Superior four-sided direct heating technology with an innovative air duct structure.

**Operation Mode:** Four operation modes for multiple temperature requirements.

**Safe and Stable:** Multiple safety protection features.

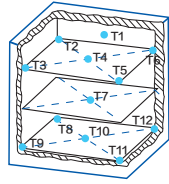
**Intelligent IoT (Optional):** 7-inch Smart LCD touch-screen; Mobile app monitors the status of the incubator and issues abnormal alarms in real time.

## Innovative & Ergonomic Design

- ◎ Personalized interface
- ◎ Aluminum foil insulation cotton
- ◎ Standard independent intelligent temperature safety controller
- ◎ Multiple security protection
- ◎ Scalable bulk data storage
- ◎ Large arc angle inner liner, easy to clean

# Constant Climate Standard Incubator

## HZP-168 with Natural Convection



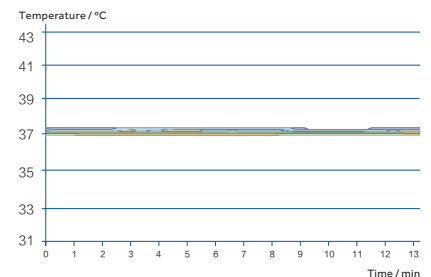
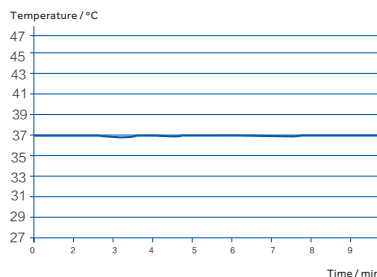
ASTM standard,  
12 points testing

Fuzzy PID control technology and high performance four-sided heating mechanisms are used to achieve precise temperature control with superior uniformity.

## Precise Temperature Control; Energy-efficient and Environment-friendly



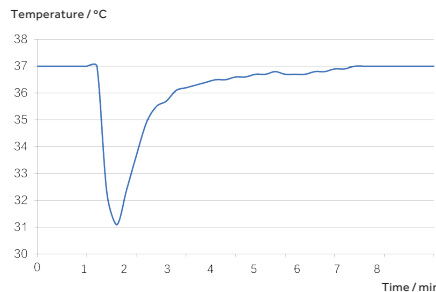
An energy-efficient model with superior control and heating mechanisms, high-quality insulation material and cabinet structure to ensure heating requirements are met while keeping power consumption to a minimum.



## Rapid Recovery After Door Open



Rapid warming: the temperature inside the unit quickly recovers after opening the door to reduce the influence of temperature fluctuation on the sample.

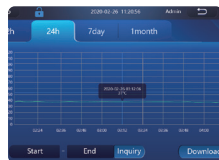


The temperature rise curve to  $37^{\circ}\text{C}$  after opening the door for 30 sec at  $22^{\circ}\text{C}$  ambient temperature.

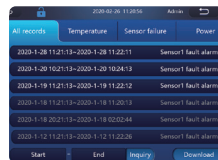
## Convenient and Intelligent Management at a Glance



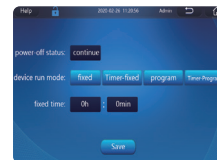
7-inch touchscreen, easy to operate and sensitive, it can respond quickly even when wearing rubber gloves.



Real-time display of temperature data, one-touch to review previous data.



Records abnormal information in real time, eliminating any hidden abnormalities which ensures the culturing is more secure.



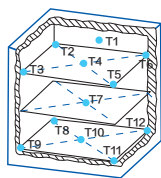
Multiple operating modes.



The program can be edited and set at any number of segments to meet the needs of various detection tests.

# Constant Climate Standard Incubator

## HFP-80 with Forced Convection



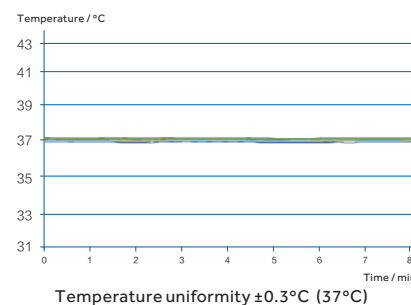
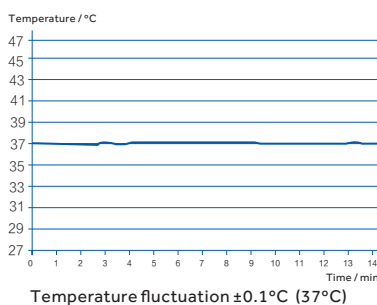
ASTM standard,  
12 points testing

Fuzzy PID control technology and high performance four-sided heating mechanisms are used to achieve precise temperature control with superior uniformity.

## Precise Temperature Control; Energy-efficient and Environment-friendly



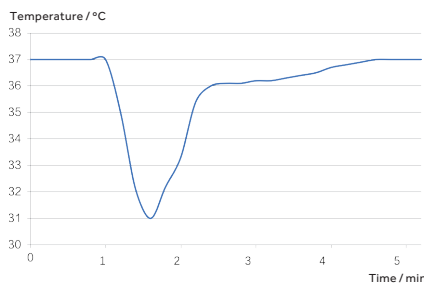
An energy-efficient forced air standard incubator model with professional air duct design, high-quality insulation material and cabinet structure to ensure heating requirements are met while keeping power consumption to a minimum.



## Rapid Recovery After Door Open



Rapid warming: the temperature inside the unit quickly recovers after opening the door to reduce the influence of temperature fluctuation on the sample.



The temperature rise curve to  $37^{\circ}\text{C}$  after opening the door for 30 sec at  $22^{\circ}\text{C}$  ambient temperature

## Optional IoT Technology for Real-time Remote Monitoring



Through the mobile app, the status of the incubator can be checked in real time, and information such as temperature alarm, sensor error alarm and door ajar can be controlled with one button, which provides more security for the experiment process.

# Constant Climate Standard Incubator

## Scope of Application

The solution is widely used in bacteria, fungi and other micro-organisms culture; as well as enzyme digestion reaction, ligation reaction, embedded incubation and other related constant temperature experiments.



Embedded incubation

Bacteria

Fungus

## Ergonomic Design



### Personalized Interface, Easy to Link

Equipped with USB and RS485 interfaces, various interfaces meet the different needs of users to transfer data.



### Scalable Bulk Data Storage

The touch-screen can be increased to 64GB storage capacity, with the data stored for 15 years, and the data can be exported through a USB flash drive.



### Multiple Protection Benefits for Increased Security

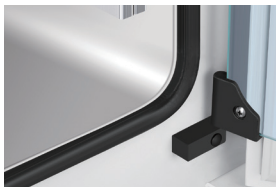
Overheat protection(OPT), over current protection(FU), sensor error detection, independent temperature limit, compliance with DIN 12880 requirements and EU 3.1 safety level; Sound, light and remote alarms (optional) which guarantee experiment safety. Multiple alarms, such as over temperature alarm, high and low temperature alarm, door ajar, and sensor error alarm.



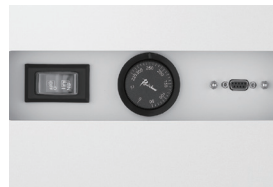
### High Thermal Insulation Performance, Energy Saving and Environmental Protection

The unit is manufactured with aluminum foil insulation cotton, which improves the overall insulation performance and reduces energy consumption, lowering costs while also being environmentally friendly.

## Pictures in Details



Seamless, curved internal chamber for easy cleaning and decontamination.



Standard independent intelligent temperature safety controller to ensure experimental safety; RS485 achieves seamless IoT data connection.

## Product Parameters

Model	Product Series	Capacity (L)	Exterior Dimensions (W*D*H mm)	Interior Dimensions (W*D*H mm)	Packing Dimensions (W*D*H mm)
HZP-168	Natural convection	168	650*782*1028	490*550*626	785*870*1198
HFP-80	Forced convection	80	560*662*870	400*400*480	704*722*1050

Shelves (Standard)	Temperature Control Range	Temperature Uniformity	Temperature Fluctuation (°C)	Temperature Control Precision (°C)	Recovery Time after 30 sec Door Opening (min)
2	RT+5-105°C	±0.5°C at 37°C	±0.1	±0.1	5
2	RT+5-105°C	±0.3°C at 37°C	±0.1	±0.1	2.5



# WolfLabs

**Pricing on any accessories shown can be found by keying the part number into the search box on our website.**

The specifications listed in this brochure are subject to change by the manufacturer and therefore cannot be guaranteed to be correct. If there are aspects of the specification that must be guaranteed, please provide these to our sales team so that details can be confirmed.

**[www.wolflabs.co.uk](http://www.wolflabs.co.uk)**

**Tel : 01759 301142**

**Fax : 01759 301143**

**[sales@wolflabs.co.uk](mailto:sales@wolflabs.co.uk)**

Please contact us if this literature doesn't answer all your questions.